



Presence Observation

Reed canarygrass

Phalaris arundinacea



Record ID: 644010

Observer: Josh Dumke

Source: Natural Resources Research Institute

Latitude: 47.248226

Longitude: -92.366577

Area: less than 1000 sq ft

Density: Patchy

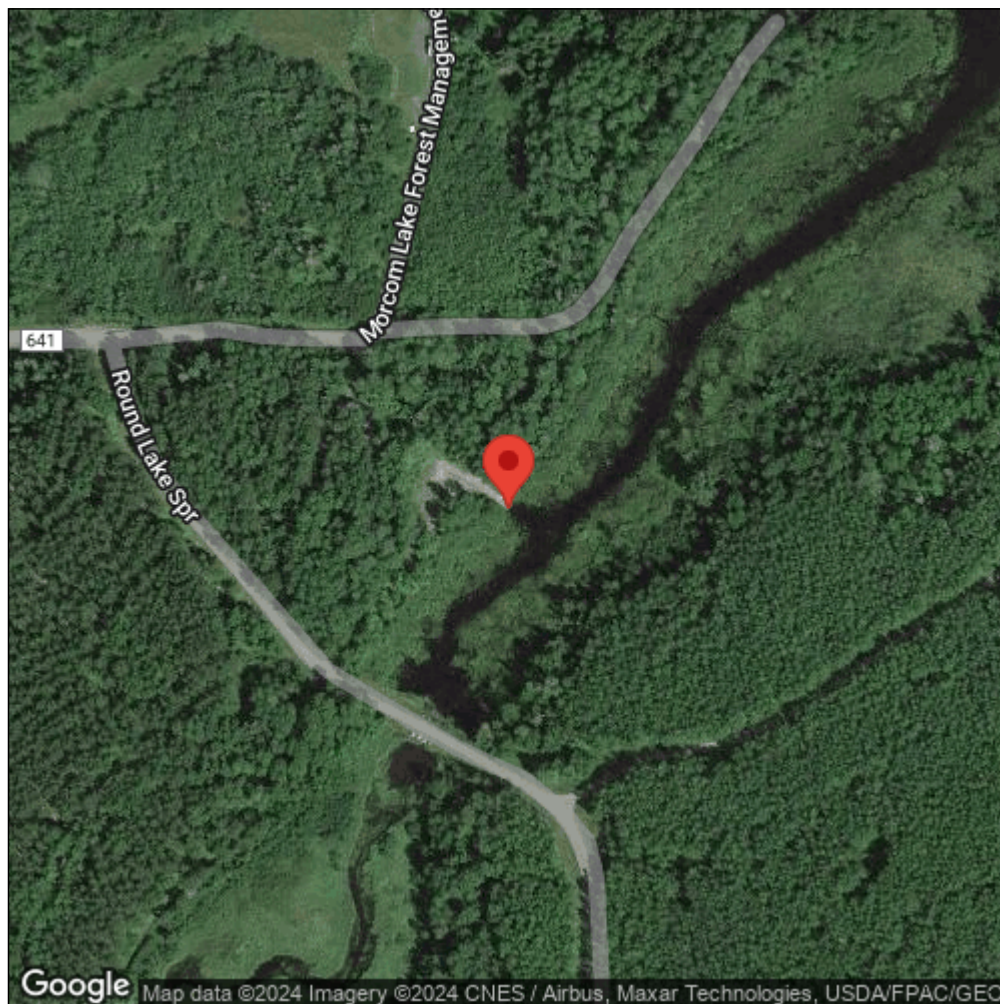
Observation Date: August 2, 2016

Date Entered: September 14, 2018

Comments: Original observer(s): K. Beaster, F. Wirtz - Pt: 62 - P. pratense, L. vulgare, T. repens, P. major, and L. corniculatus present. MorcLk_062 - Morcom Lake, Paleface Crk State W.A. Site - emergent marsh - Class: C - Range: 51-100 - Est. patch: 5



Midwest Invasive Species
Information Network



Source: MISIN. 2024. Midwest Invasive Species Information Network. Michigan State University - Applied Spatial Ecology and Technical Services Laboratory. This record is available online at <https://www.misin.msu.edu/report/misin/submit/summary/printRecord.php?obs=reprint&id=644010>