



## Presence Observation

### Reed canarygrass

*Phalaris arundinacea*



**Record ID:** 644030

**Observer:** Josh Dumke

**Source:** Natural Resources Research Institute

**Latitude:** 47.441672

**Longitude:** -92.143479

**Area:** less than 1000 sq ft

**Density:** Dense

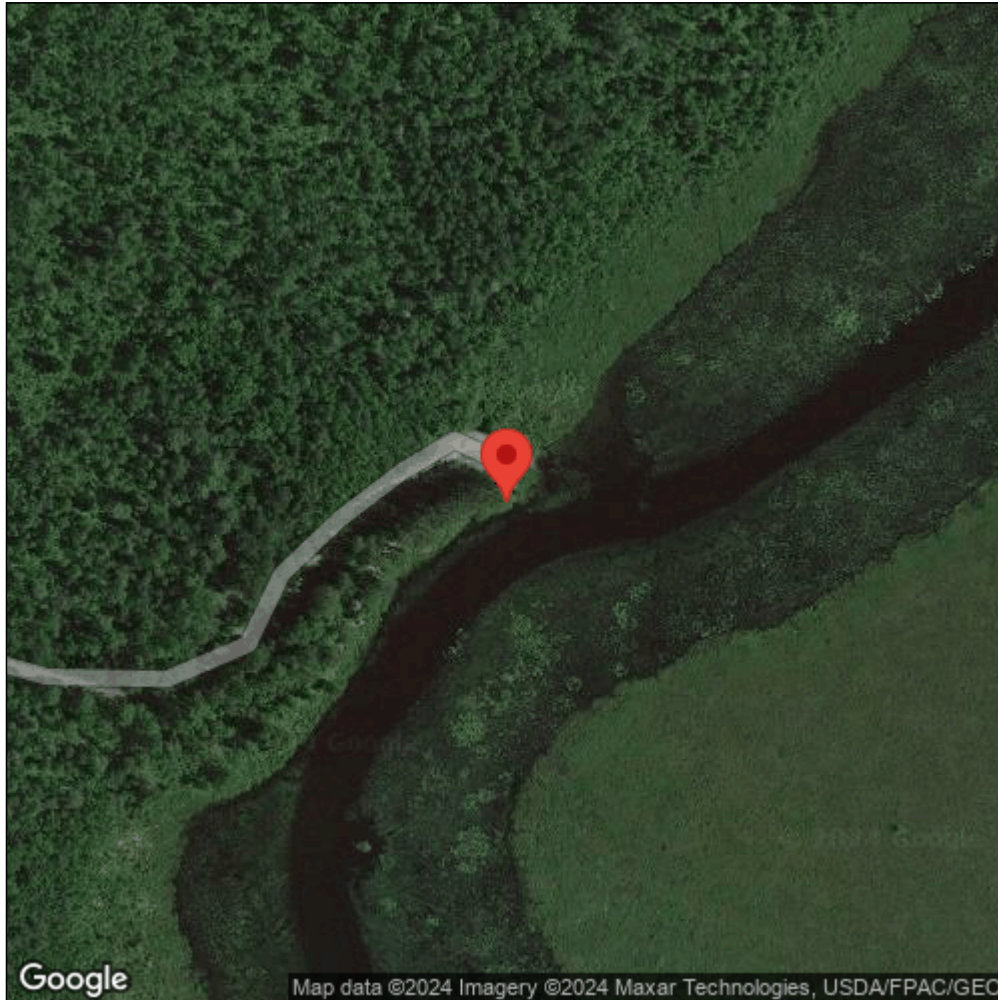
**Observation Date:** August 17, 2016

**Date Entered:** September 14, 2018

**Comments:** Original observer(s): Kelly Beaster, Farrah Wirtz - GPS Pnt: 195 - locally known as "Norway Point". *L. corniculatus* found in meadow zone at too low of a pop. to record. StLoR1\_195 - Class: E - Range: 501-1000



Midwest Invasive Species  
Information Network



Source: MISIN. 2024. Midwest Invasive Species Information Network. Michigan State University - Applied Spatial Ecology and Technical Services Laboratory. This record is available online at <https://www.misin.msu.edu/report/misin/submit/summary/printRecord.php?obs=reprint&id=644030>