



## Presence Observation

### Narrow-leaved cat-tail

*Typha angustifolia*



**Record ID:** 644033

**Observer:** Josh Dumke

**Source:** Natural Resources Research Institute

**Latitude:** 46.65933339

**Longitude:** -92.25651791

**Area:** 1000 sq ft to 1/2 acre

**Density:** Patchy

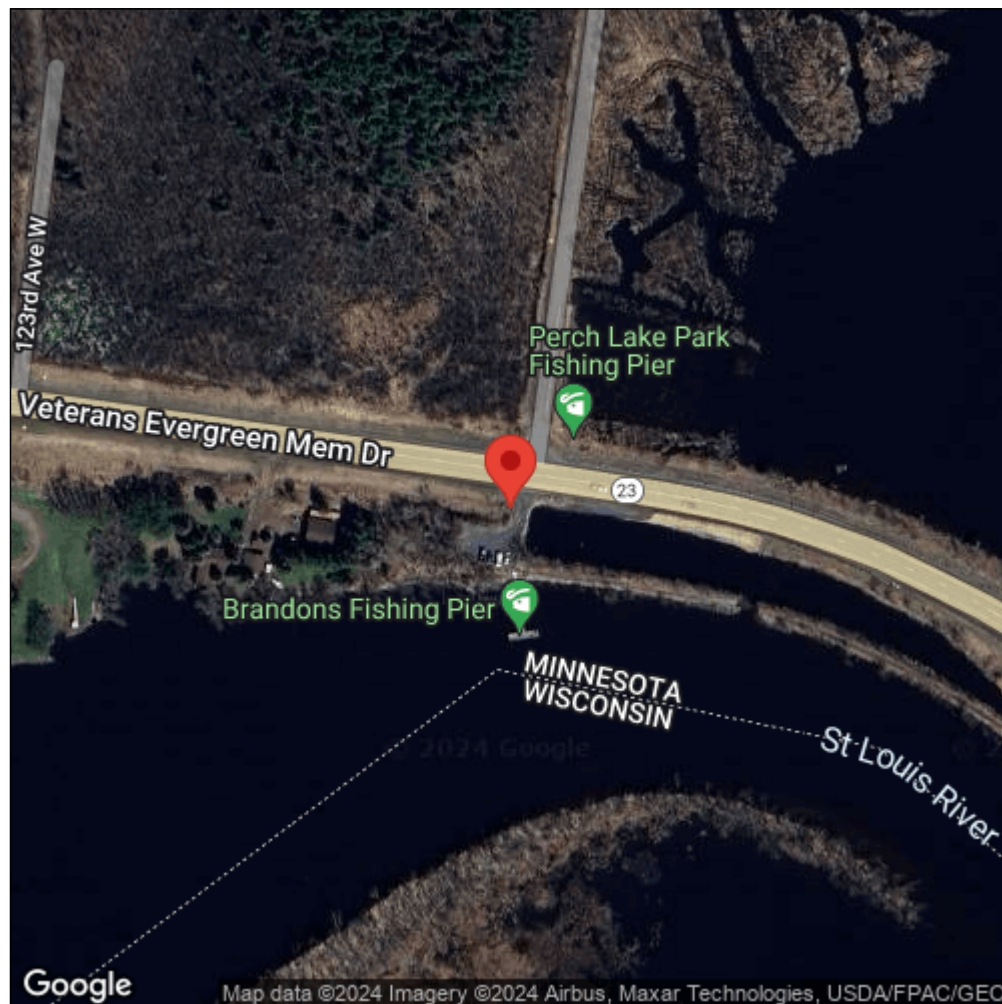
**Observation Date:** July 19, 2016

**Date Entered:** September 14, 2018

**Comments:** Original observer(s): Kelly Beaster, Farrah Wirtz - GPS Pnt: 52 - SLRE2\_052 - St. Louis River, Fond du Lac (E) State W.A. Site -emergent marsh - Class: C - Range: 51-100 - Est. patch: 100 - Elev: 186.0737



Midwest Invasive Species  
Information Network



Source: MISIN. 2024. Midwest Invasive Species Information Network. Michigan State University - Applied Spatial Ecology and Technical Services Laboratory. This record is available online at <https://www.misin.msu.edu/report/misin/submit/summary/printRecord.php?obs=reprint&id=644033>