



## Presence Observation

### Reed canarygrass

*Phalaris arundinacea*



**Record ID:** 644042

**Observer:** Josh Dumke

**Source:** Natural Resources Research Institute

**Latitude:** 47.48125385

**Longitude:** -92.03948072

**Area:** less than 1000 sq ft

**Density:** Patchy

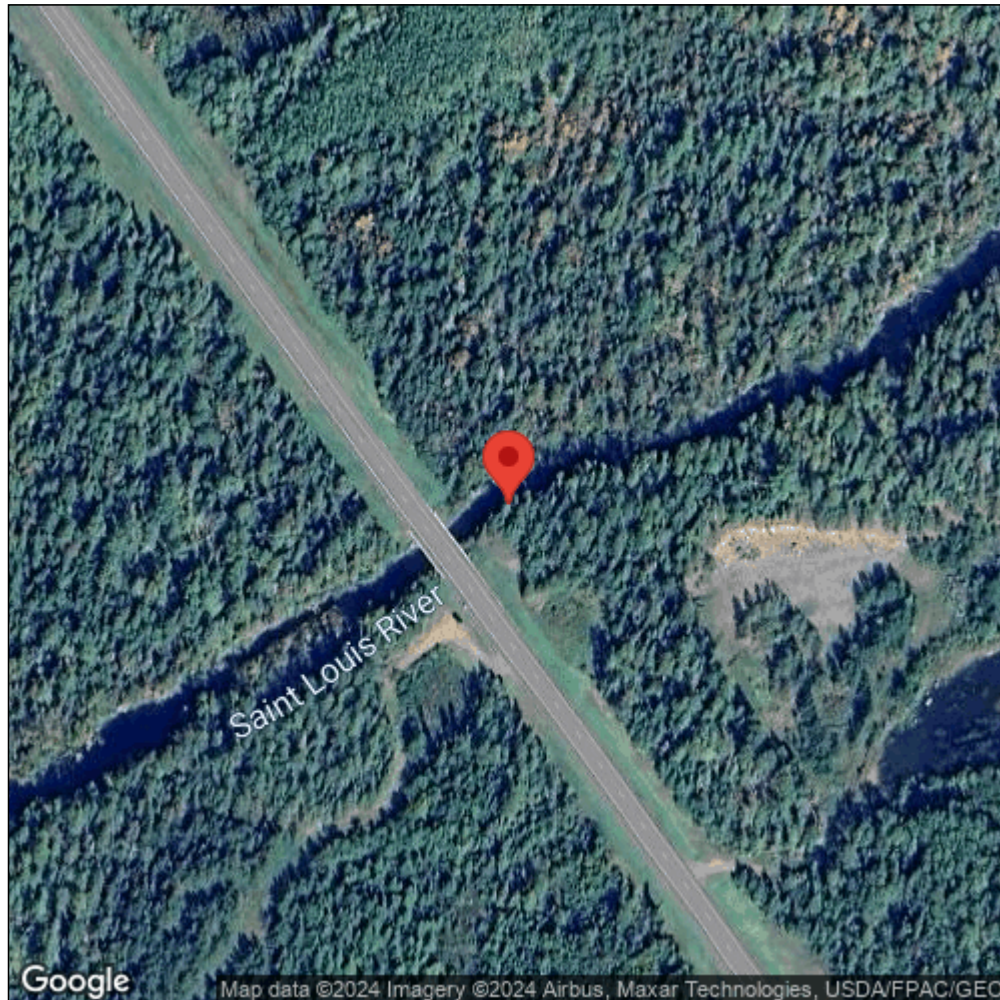
**Observation Date:** August 17, 2016

**Date Entered:** September 14, 2018

**Comments:** Original observer(s): K. Beaster, F. Wirtz - GPS Pt: 207 - B. inermis and L. corniculatus in low pop at site - StLoR4\_207 - St. Louis River, Hwy 110 State W.A. Site - mixed forest - Class: C - Range: 51-100 - Est. patch: 4 - Elev: 466.993439



Midwest Invasive Species  
Information Network



Source: MISIN. 2024. Midwest Invasive Species Information Network. Michigan State University - Applied Spatial Ecology and Technical Services Laboratory. This record is available online at <https://www.misin.msu.edu/report/misin/submit/summary/printRecord.php?obs=reprint&id=644042>