



Presence Observation

Reed canarygrass

Phalaris arundinacea



Record ID: 644045

Observer: Josh Dumke

Source: Natural Resources Research Institute

Latitude: 47.481038

Longitude: -92.039621

Area: less than 1000 sq ft

Density: Patchy

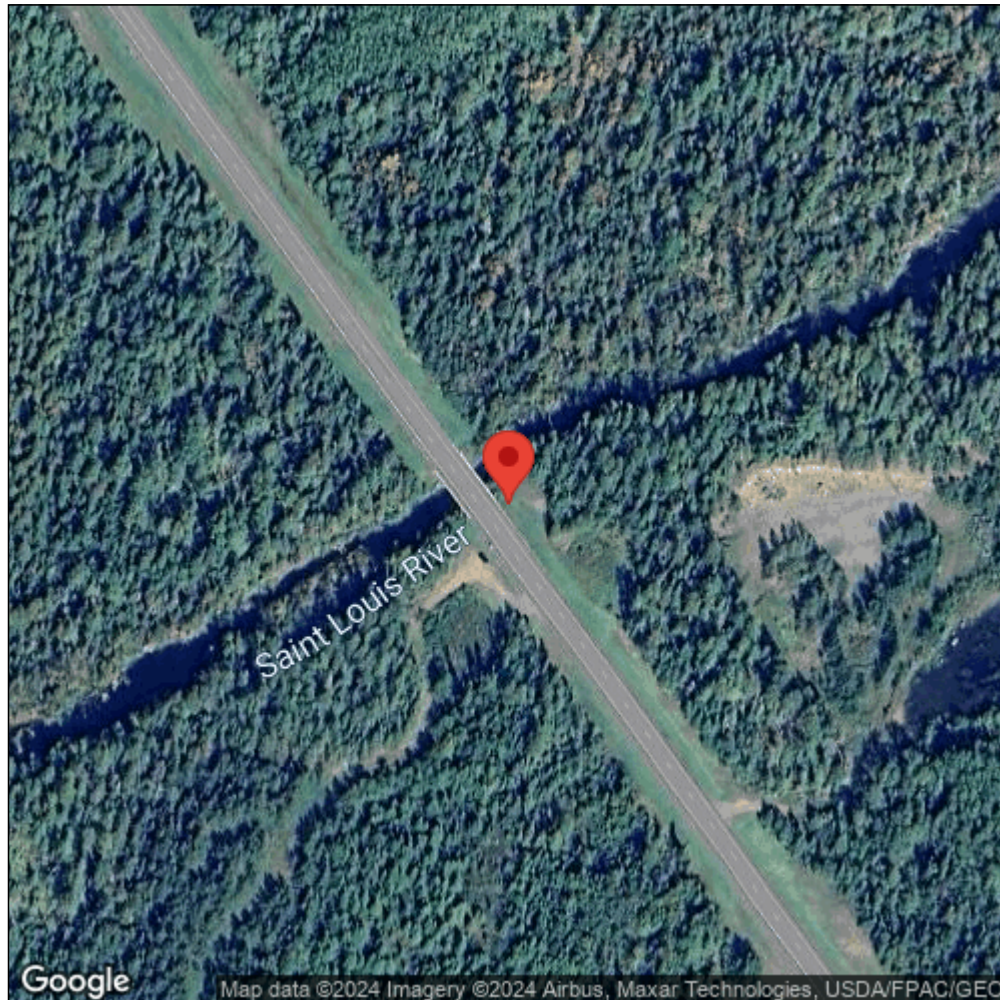
Observation Date: August 17, 2016

Date Entered: September 14, 2018

Comments: Original observer(s): K. Beaster, F. Wirtz - GPS Pt: 204 - B. inermis and Lotus corniculatus in low populations at site - StLoR4_204 - St. Louis River, Hwy 110 State W.A. Site - wet meadow - Class: B - Range: 11-50 - Est. patch: 6 - Elev: 468.859985



Midwest Invasive Species
Information Network



Source: MISIN. 2024. Midwest Invasive Species Information Network. Michigan State University - Applied Spatial Ecology and Technical Services Laboratory. This record is available online at <https://www.misin.msu.edu/report/misin/submit/summary/printRecord.php?obs=reprint&id=644045>