



Presence Observation

Reed canarygrass

Phalaris arundinacea



Record ID: 644078

Observer: Josh Dumke

Source: Natural Resources Research Institute

Latitude: 48.054699

Longitude: -92.481031

Area: less than 1000 sq ft

Density: Monoculture

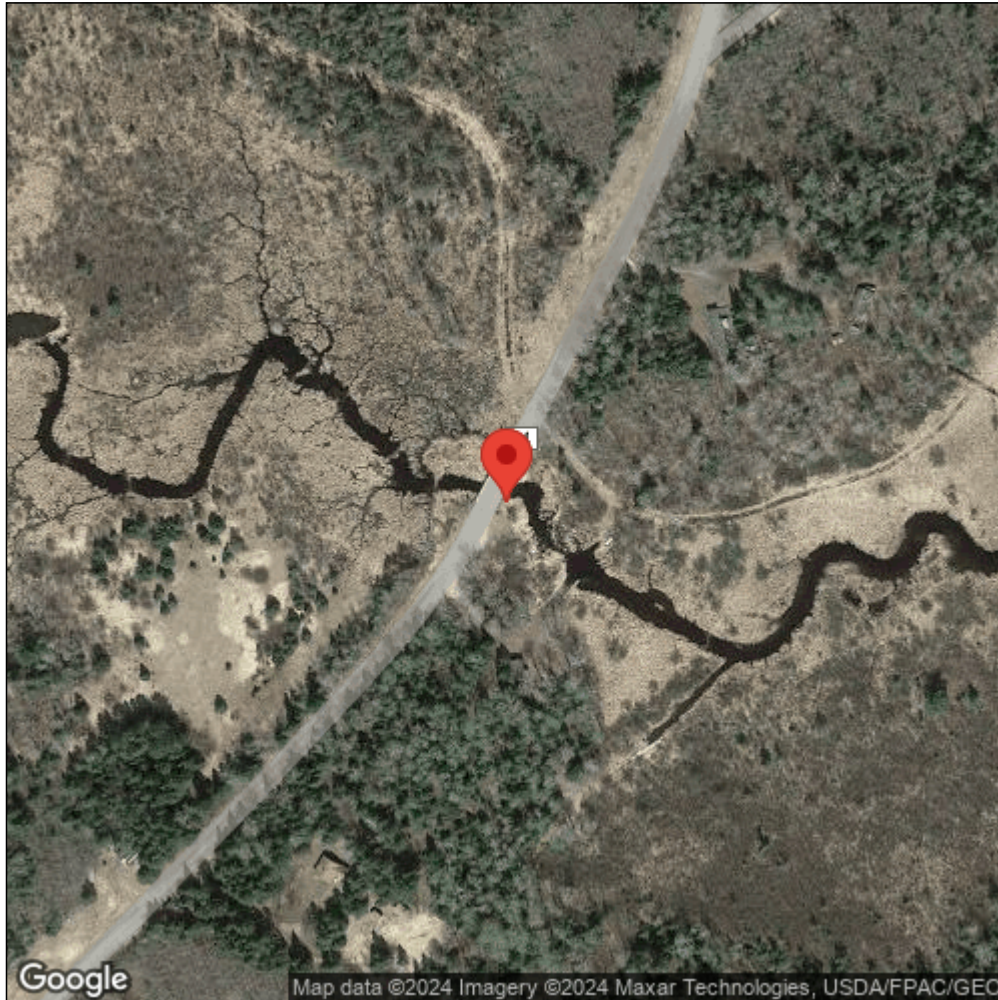
Observation Date: August 11, 2016

Date Entered: September 14, 2018

Comments: Original observer(s): Kelly Beaster, Farrah Wirtz - GPS Pnt: 175 - VermR1_175 - Vermilion River, 8 Mile creek State W.A. Site - wet meadow - Class: F - Range: >1000 - Est. patch: 50 - Elev: 394.465851



Midwest Invasive Species
Information Network



Source: MISIN. 2024. Midwest Invasive Species Information Network. Michigan State University - Applied Spatial Ecology and Technical Services Laboratory. This record is available online at <https://www.misin.msu.edu/report/misin/submit/summary/printRecord.php?obs=reprint&id=644078>