



Presence Observation

Reed canarygrass

Phalaris arundinacea



Record ID: 644087

Observer: Josh Dumke

Source: Natural Resources Research Institute

Latitude: 48.23498855

Longitude: -92.57772943

Area: less than 1000 sq ft

Density: Monoculture

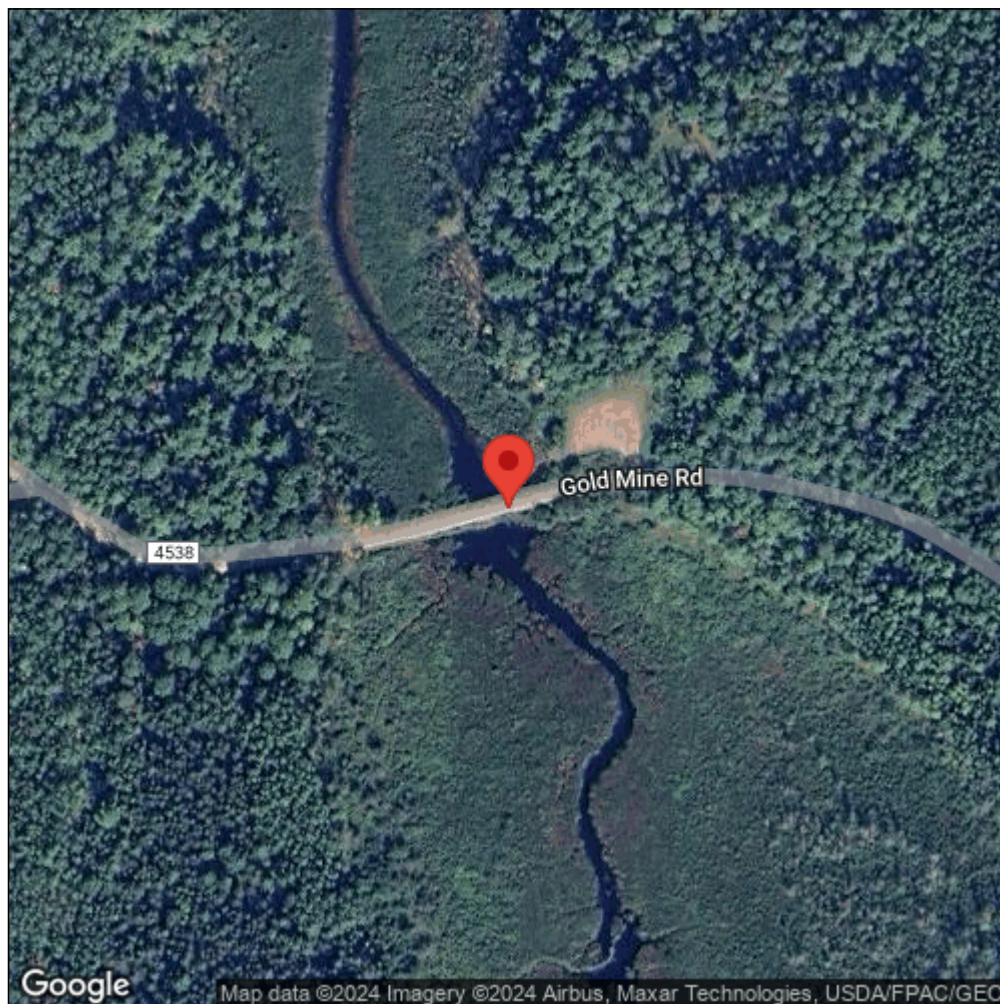
Observation Date: September 21, 2017

Date Entered: September 14, 2018

Comments: Original observer(s): Deb Pomroy, Ray Barnes - GPS Pnt: 1332 - West side of road - VermR3_1332 - Vermilion River, Holmes Creek State W.A. Site - tall grass - wet meadow - Class: F - Range: >1000 - Est. patch: 49 - Elev: 376.11676



Midwest Invasive Species
Information Network



Source: MISIN. 2024. Midwest Invasive Species Information Network. Michigan State University - Applied Spatial Ecology and Technical Services Laboratory. This record is available online at <https://www.misin.msu.edu/report/misin/submit/summary/printRecord.php?obs=reprint&id=644087>