



Presence Observation

Reed canarygrass

Phalaris arundinacea



Record ID: 644097

Observer: Josh Dumke

Source: Natural Resources Research Institute

Latitude: 47.32790416

Longitude: -92.14782817

Area: less than 1000 sq ft

Density: Dense

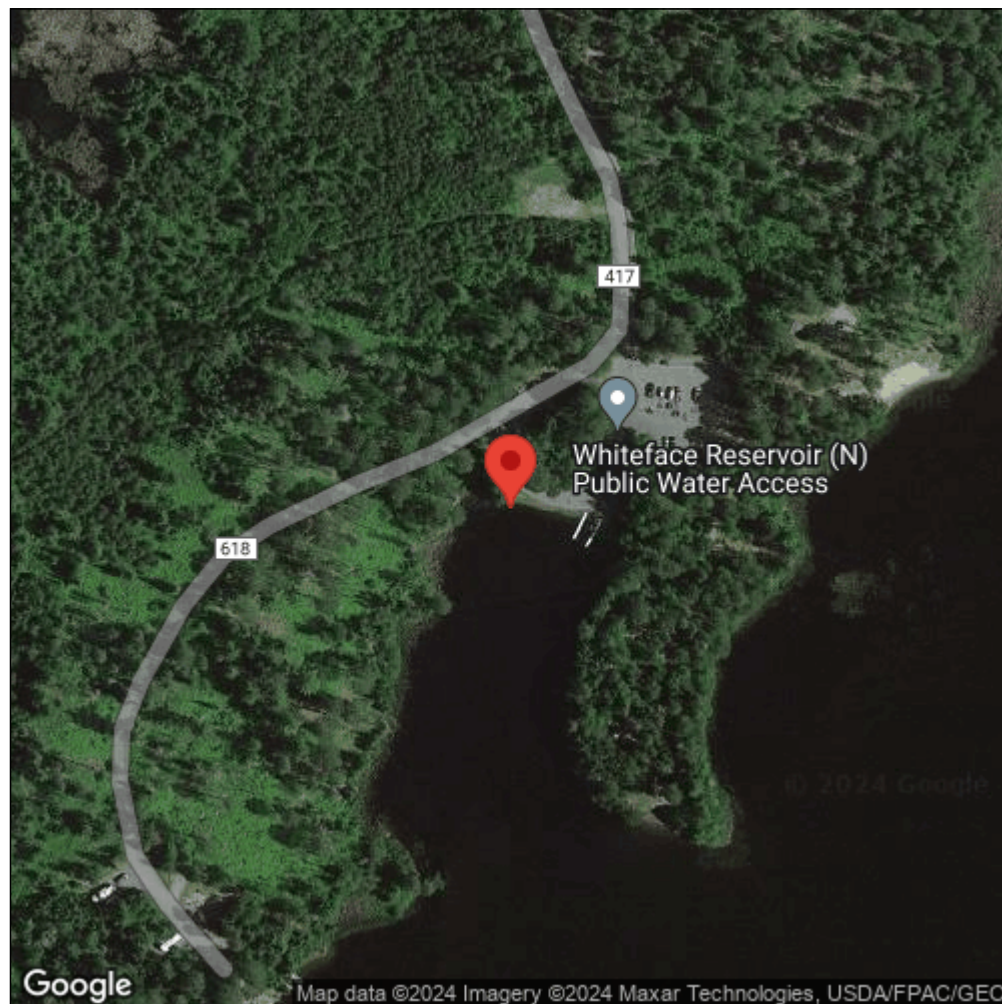
Observation Date: August 1, 2016

Date Entered: September 14, 2018

Comments: Original observer(s): K. Beaster, F. Wirtz - GPS Pnt: 9 - GPS 2. L. corniculatus present in small pop. Submergent zone evident on foot but not on map - WhiRe2_009 - Whiteface Reservoir, USFS Campgrounds (N) State W.A - Class: E - Range: 501-1000



Midwest Invasive Species
Information Network



Source: MISIN. 2024. Midwest Invasive Species Information Network. Michigan State University - Applied Spatial Ecology and Technical Services Laboratory. This record is available online at <https://www.misin.msu.edu/report/misin/submit/summary/printRecord.php?obs=reprint&id=644097>