



## Presence Observation

### Purple loosestrife

*Lythrum salicaria*



**Record ID:** 648929

**Observer:** Elise Desjarlais

**Source:** Lake to Lake CISMA

**Latitude:** 46.4576

**Longitude:** -87.68247

**Area:** less than 1000 sq ft

**Density:** Dense

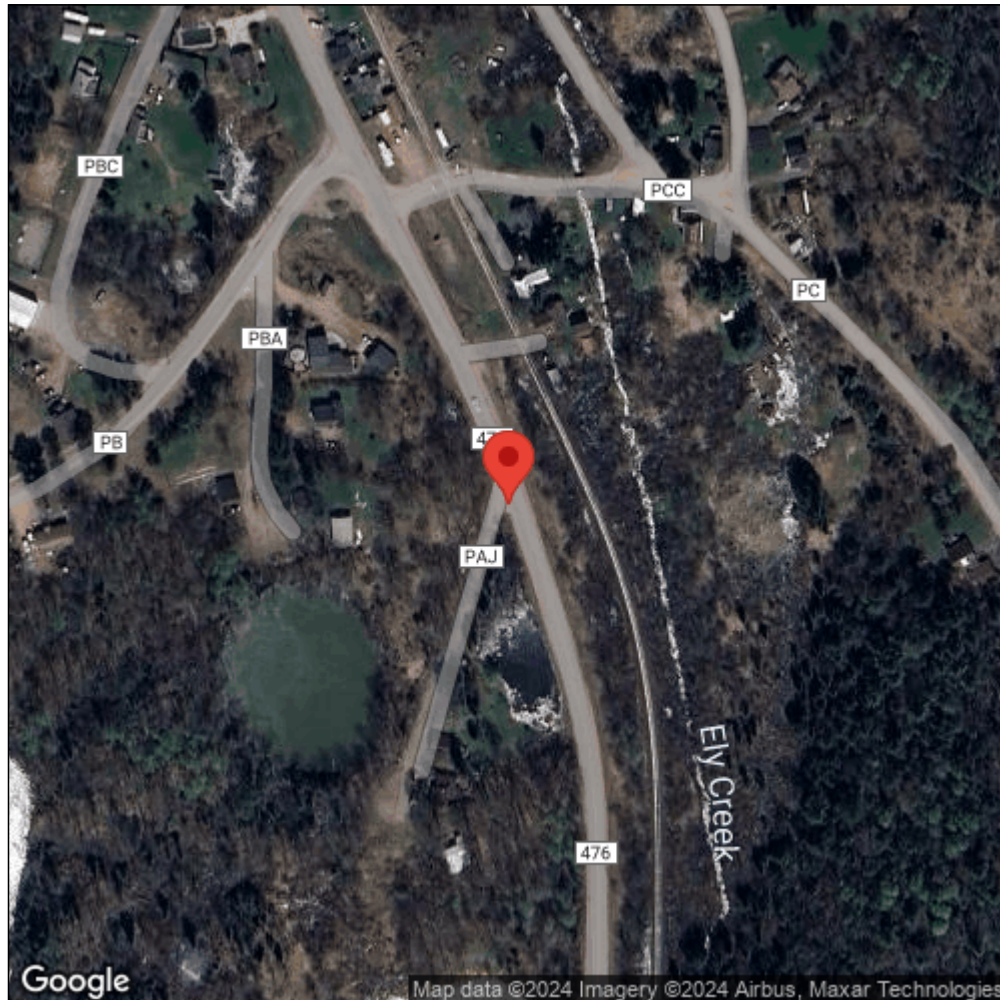
**Observation Date:** September 2, 2018

**Date Entered:** October 31, 2018

**Comments:** Waypoint: MQJFPL - MISIN alert - Treatment: D



Midwest Invasive Species  
Information Network



Source: MISIN. 2024. Midwest Invasive Species Information Network. Michigan State University - Applied Spatial Ecology and Technical Services Laboratory. This record is available online at <https://www.misin.msu.edu/report/misin/submit/summary/printRecord.php?obs=reprint&id=648929>