



Presence Observation

Narrow-leaved cat-tail

Typha angustifolia



Record ID: 656834

Observer: Michigan Dune Alliance

Source: The Nature Conservancy

Latitude: 45.74556377

Longitude: -85.50851485

Area: less than 1000 sq ft

Density: Sparse

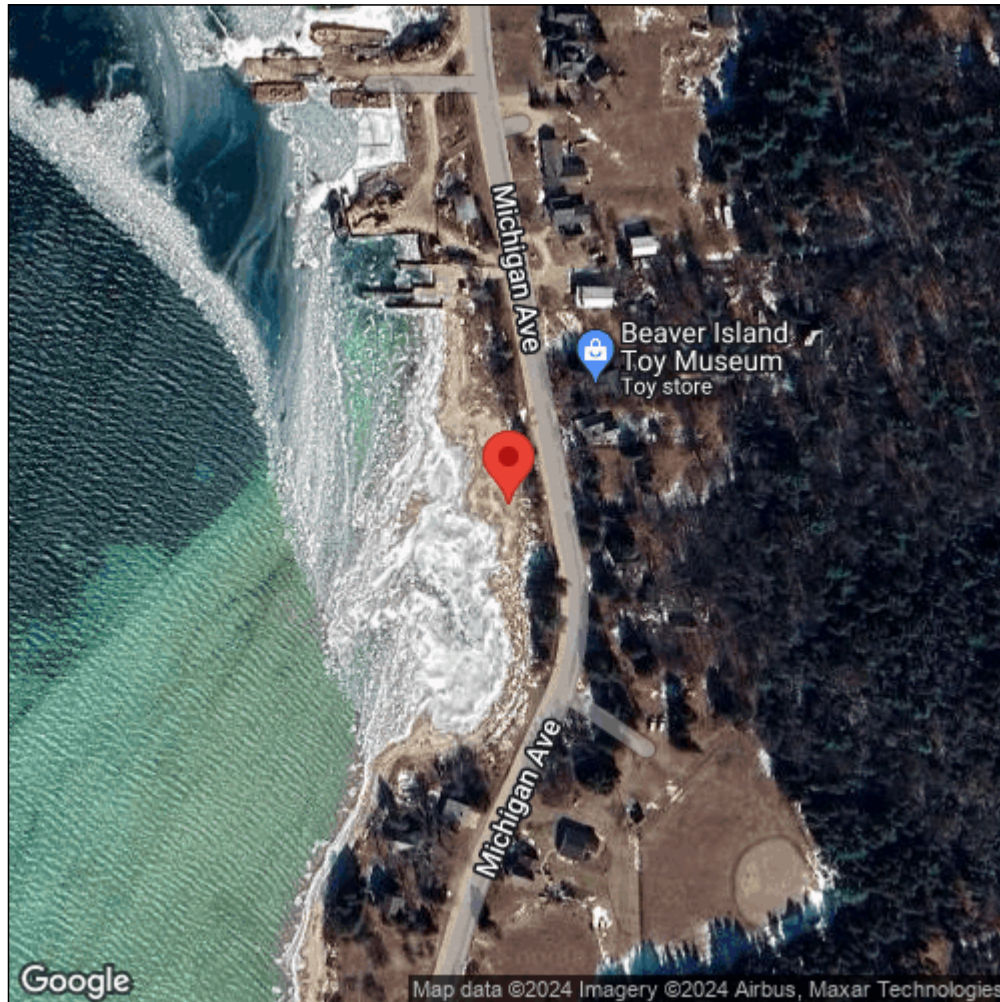
Observation Date: June 1, 2017

Date Entered: February 13, 2019

Comments: GEI 2017 Project - Location: BI - Observer: CW - Status: Don't Know



Midwest Invasive Species
Information Network



Source: MISIN. 2024. Midwest Invasive Species Information Network. Michigan State University - Applied Spatial Ecology and Technical Services Laboratory. This record is available online at <https://www.misin.msu.edu/report/misin/submit/summary/printRecord.php?obs=reprint&id=656834>