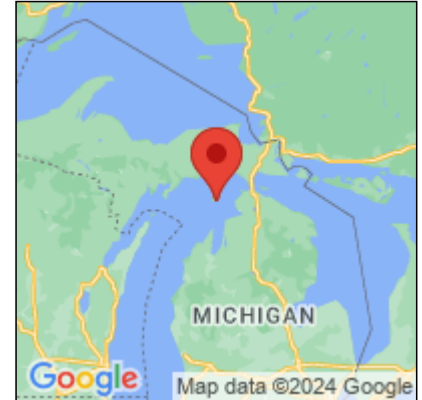




Presence Observation

Narrow-leaved cat-tail

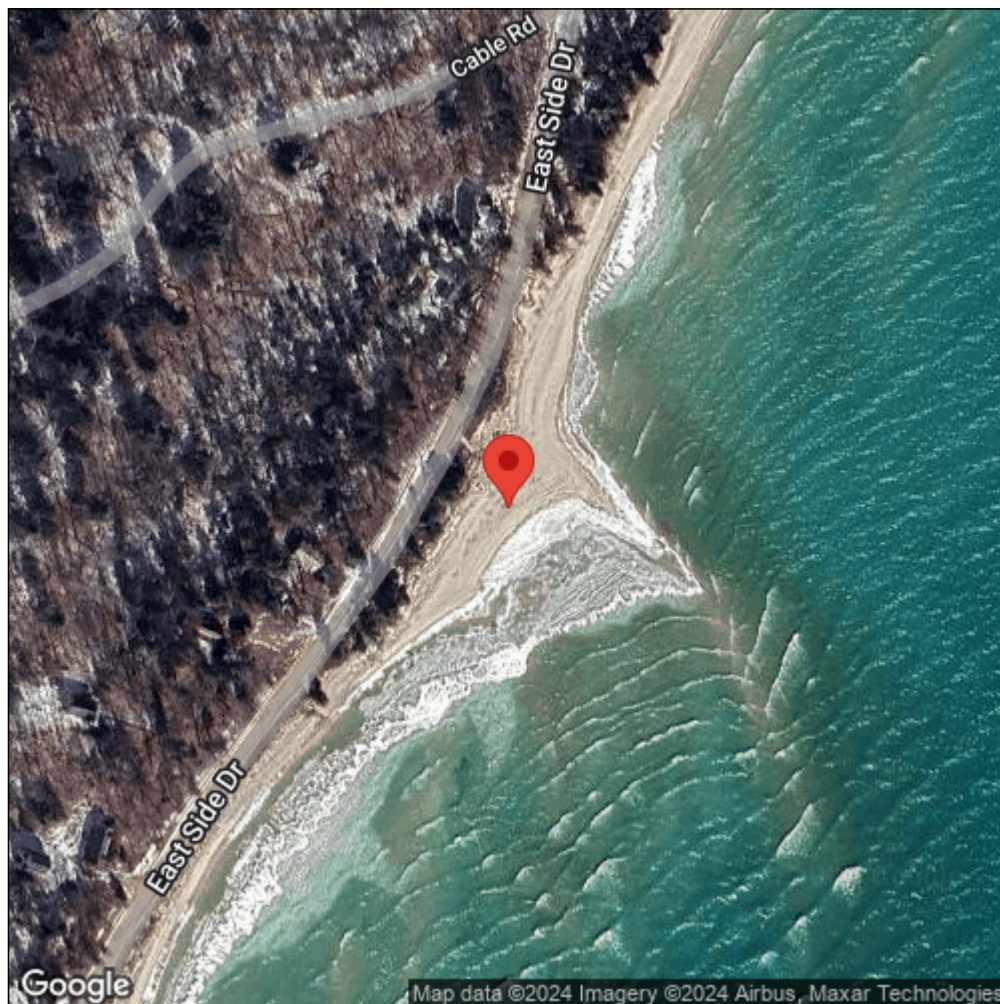
Typha angustifolia



| | |
|-------------------|--|
| Record ID: | 657916 |
| Observer: | Michigan Dune Alliance |
| Source: | The Nature Conservancy |
| Latitude: | 45.58701766 |
| Longitude: | -85.53187764 |
| Area: | less than 1000 sq ft |
| Density: | Patchy |
| Observation Date: | June 25, 2017 |
| Date Entered: | February 13, 2019 |
| Comments: | GEI 2017 Project - Location: BI - Observer: JRG - Status: Don?t Know |



Midwest Invasive Species
Information Network



Source: MISIN. 2024. Midwest Invasive Species Information Network. Michigan State University - Applied Spatial Ecology and Technical Services Laboratory. This record is available online at <https://www.misin.msu.edu/report/misin/submit/summary/printRecord.php?obs=reprint&id=657916>