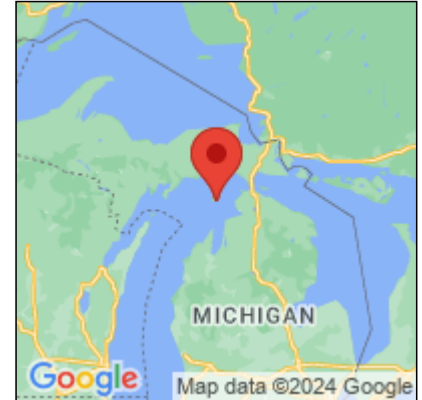




Presence Observation

Narrow-leaved cat-tail

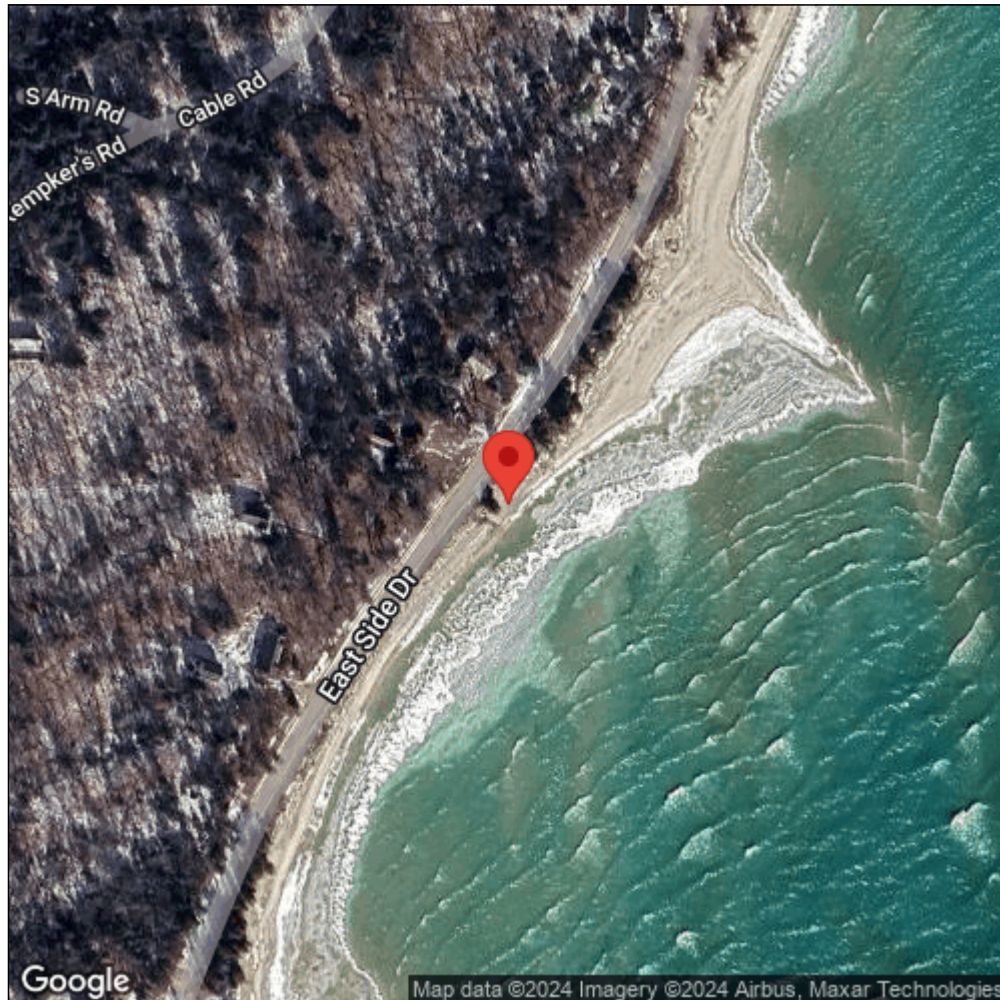
Typha angustifolia



Record ID:	657922
Observer:	Michigan Dune Alliance
Source:	The Nature Conservancy
Latitude:	45.58630618
Longitude:	-85.53279884
Area:	less than 1000 sq ft
Density:	Sparse
Observation Date:	June 25, 2017
Date Entered:	February 13, 2019
Comments:	GEI 2017 Project - Location: BI - Observer: JRG - Status: Don?t Know



Midwest Invasive Species
Information Network



Source: MISIN. 2024. Midwest Invasive Species Information Network. Michigan State University - Applied Spatial Ecology and Technical Services Laboratory. This record is available online at <https://www.misin.msu.edu/report/misin/submit/summary/printRecord.php?obs=reprint&id=657922>