



Midwest Invasive Species  
Information Network

## Presence Observation

### Purple loosestrife

*Lythrum salicaria*



**Record ID:** 659052

**Observer:** Michigan Dune Alliance

**Source:** SWMLC

**Latitude:** 42.5354

**Longitude:** -86.241302

**Area:** 1000 sq ft to 1/2 acre

**Density:** Patchy

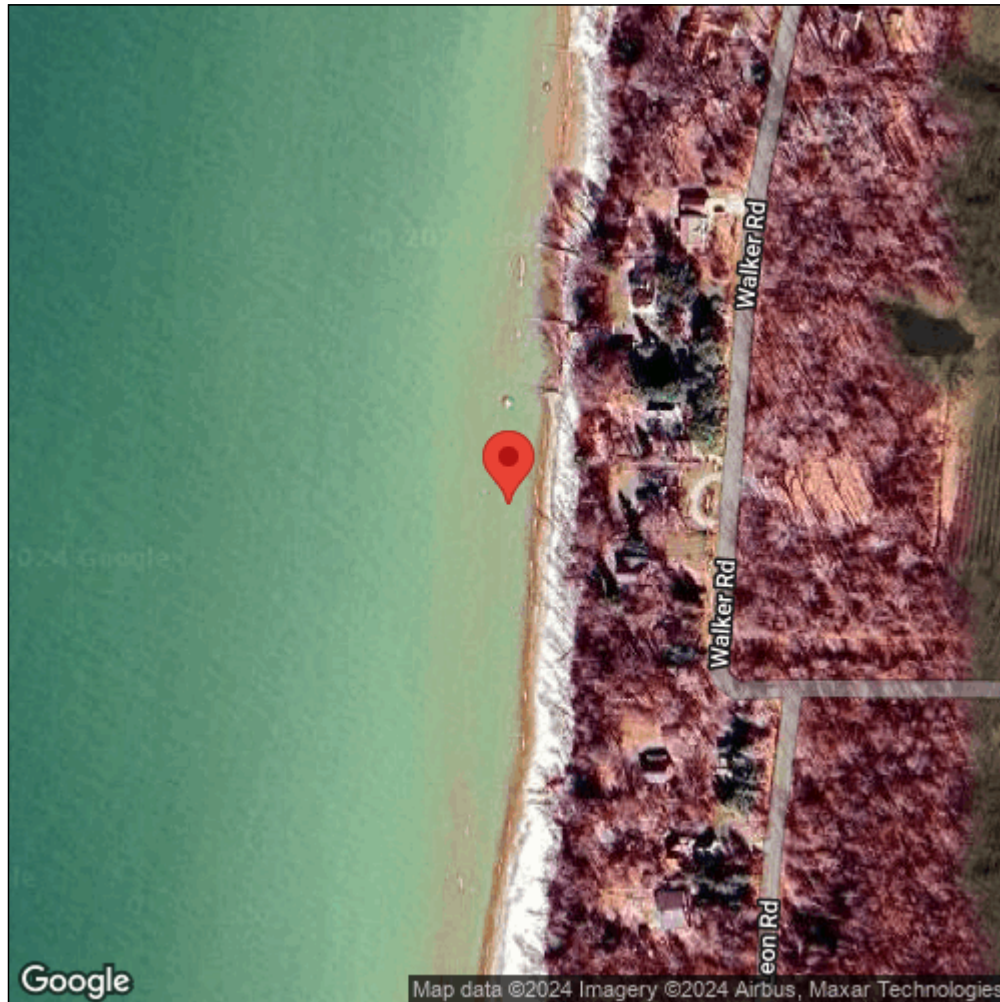
**Observation Date:** August 27, 2014

**Date Entered:** February 13, 2019

**Comments:** Original observer(s): Ross Crawford - Treatment: UT



Midwest Invasive Species  
Information Network



Source: MISIN. 2024. Midwest Invasive Species Information Network. Michigan State University - Applied Spatial Ecology and Technical Services Laboratory. This record is available online at <https://www.misin.msu.edu/report/misin/submit/summary/printRecord.php?obs=reprint&id=659052>