



Midwest Invasive Species
Information Network

Presence Observation

Reed canarygrass

Phalaris arundinacea



Record ID: 662529

Observer: Joshua Booker

Source: U.S. Fish and Wildlife Service

Latitude: 40.04877844

Longitude: -95.24750015

Area: Individual/Few/Several

Density: Patchy

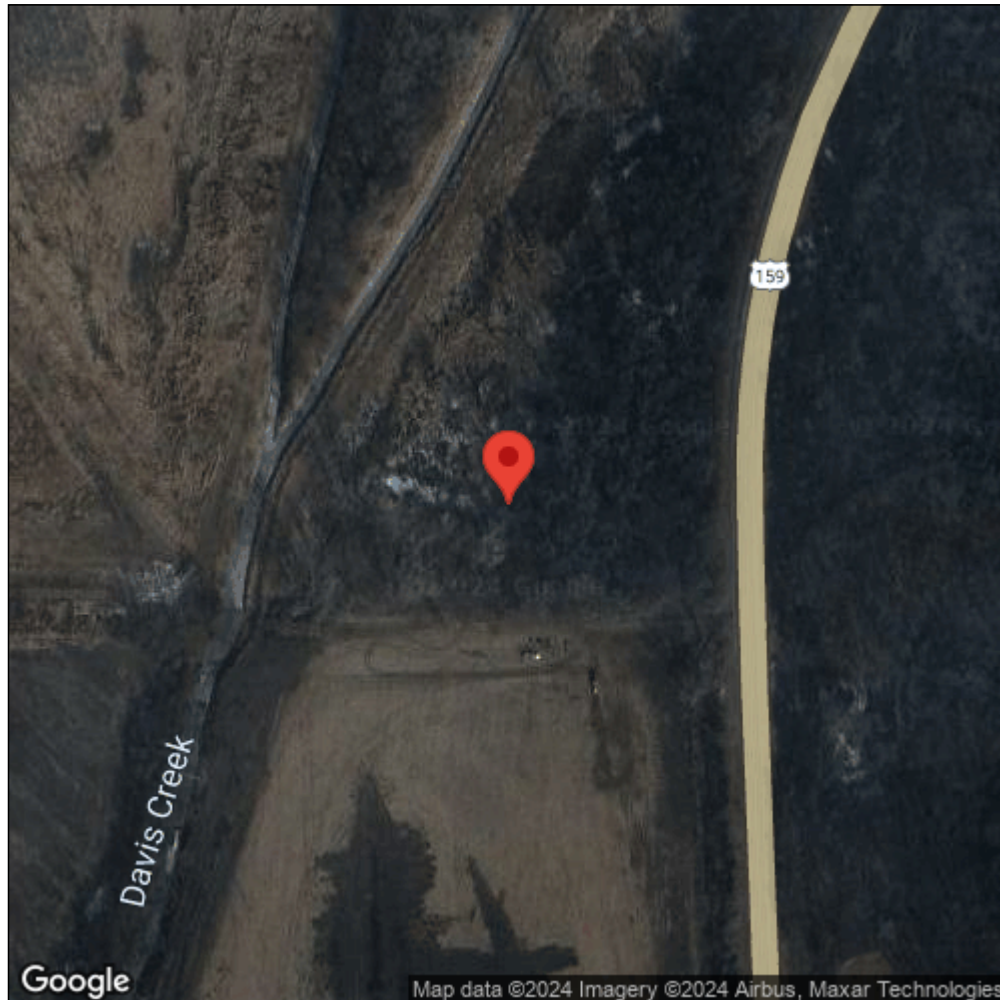
Observation Date: June 4, 2018

Date Entered: March 12, 2019

Comments: Original observer(s): U.S. Fish and Wildlife Service - SQC85 -
Scattered plants - Treated: D



Midwest Invasive Species
Information Network



Source: MISIN. 2024. Midwest Invasive Species Information Network. Michigan State University - Applied Spatial Ecology and Technical Services Laboratory. This record is available online at <https://www.misin.msu.edu/report/misin/submit/summary/printRecord.php?obs=reprint&id=662529>