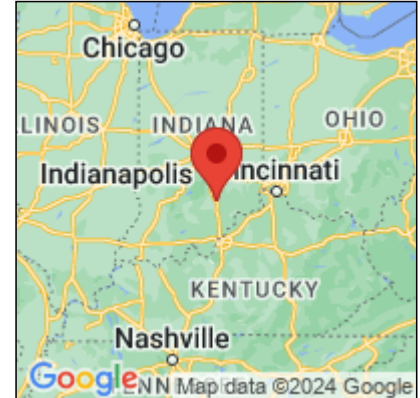




## Presence Observation

### Reed canarygrass

*Phalaris arundinacea*



**Record ID:** 715960

**Observer:** Joshua Booker

**Source:** U.S. Fish and Wildlife Service

**Latitude:** 38.94086578

**Longitude:** -85.82433214

**Area:** Not Reported

**Density:** Monoculture

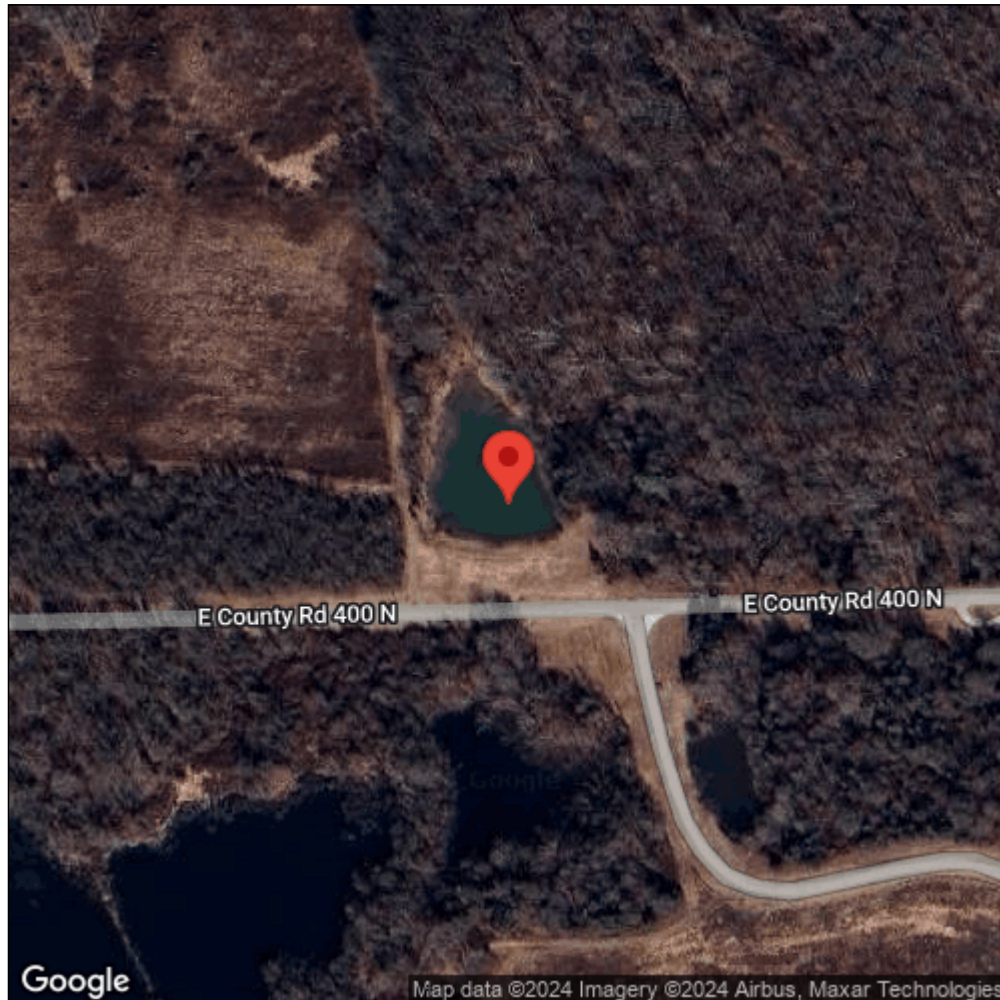
**Observation Date:** January 1, 2011

**Date Entered:** March 12, 2019

**Comments:** Original observer(s): U.S. Fish and Wildlife Service - MSC8498 -  
Dense monoculture - Treated: D



Midwest Invasive Species  
Information Network



Source: MISIN. 2024. Midwest Invasive Species Information Network. Michigan State University - Applied Spatial Ecology and Technical Services Laboratory. This record is available online at <https://www.misin.msu.edu/report/misin/submit/summary/printRecord.php?obs=reprint&id=715960>