



## Presence Observation

### Reed canarygrass

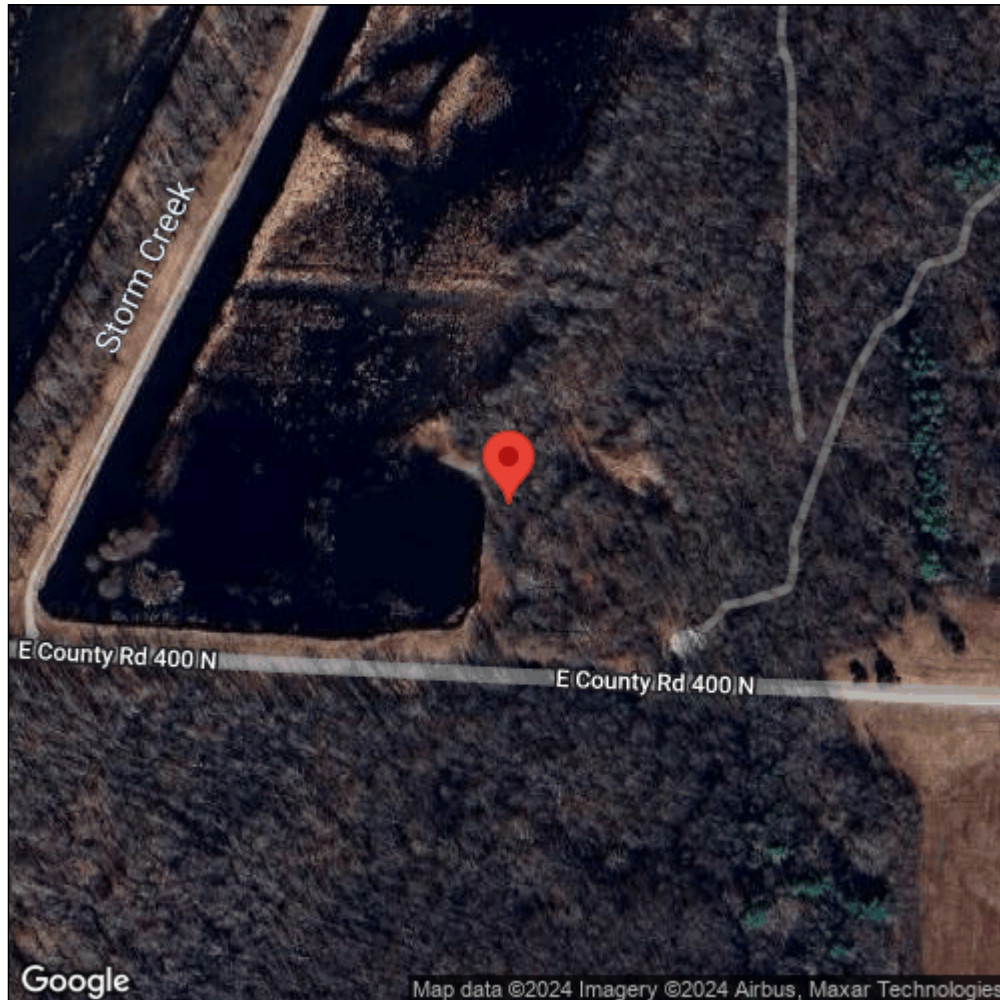
*Phalaris arundinacea*



Record ID:	716022
Observer:	Joshua Booker
Source:	U.S. Fish and Wildlife Service
Latitude:	38.94109932
Longitude:	-85.80298232
Area:	Not Reported
Density:	Patchy
Observation Date:	January 1, 2011
Date Entered:	March 12, 2019
Comments:	Original observer(s): U.S. Fish and Wildlife Service - MSC10826 - Scattered plants - Treated: D



Midwest Invasive Species  
Information Network



Source: MISIN. 2024. Midwest Invasive Species Information Network. Michigan State University - Applied Spatial Ecology and Technical Services Laboratory. This record is available online at <https://www.misin.msu.edu/report/misin/submit/summary/printRecord.php?obs=reprint&id=716022>