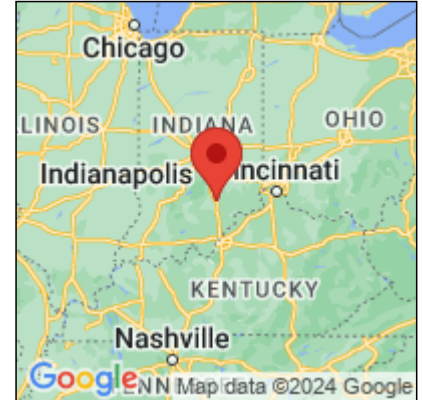




Presence Observation

Reed canarygrass

Phalaris arundinacea



Record ID: 716173

Observer: Joshua Booker

Source: U.S. Fish and Wildlife Service

Latitude: 38.93953177

Longitude: -85.82608489

Area: Not Reported

Density: Patchy

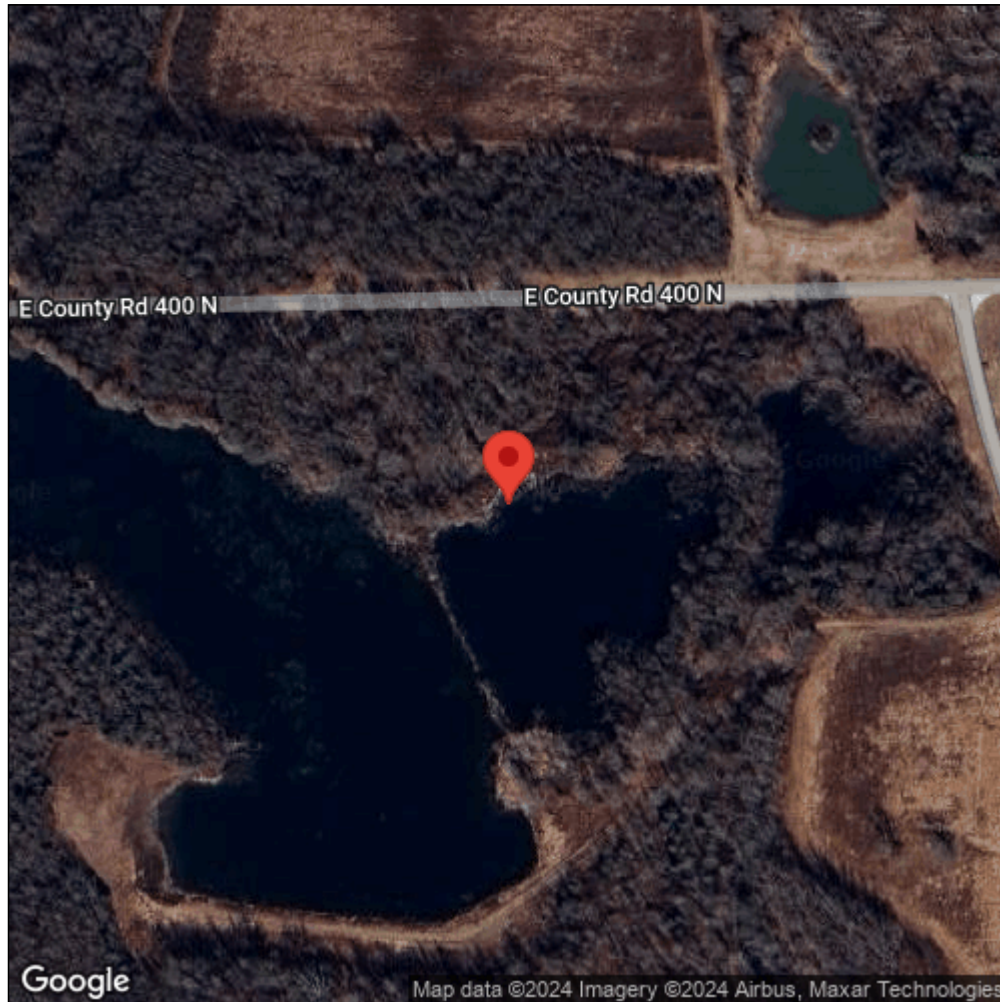
Observation Date: January 1, 2011

Date Entered: March 12, 2019

Comments: Original observer(s): U.S. Fish and Wildlife Service - MSC6768 -
Scattered plants - Treated: D



Midwest Invasive Species
Information Network



Source: MISIN. 2024. Midwest Invasive Species Information Network. Michigan State University - Applied Spatial Ecology and Technical Services Laboratory. This record is available online at <https://www.misin.msu.edu/report/misin/submit/summary/printRecord.php?obs=reprint&id=716173>