



Presence Observation

Reed canarygrass

Phalaris arundinacea



Record ID: 716359

Observer: Joshua Booker

Source: U.S. Fish and Wildlife Service

Latitude: 39.04341364

Longitude: -85.4805374

Area: Individual/Few/Several

Density: Patchy

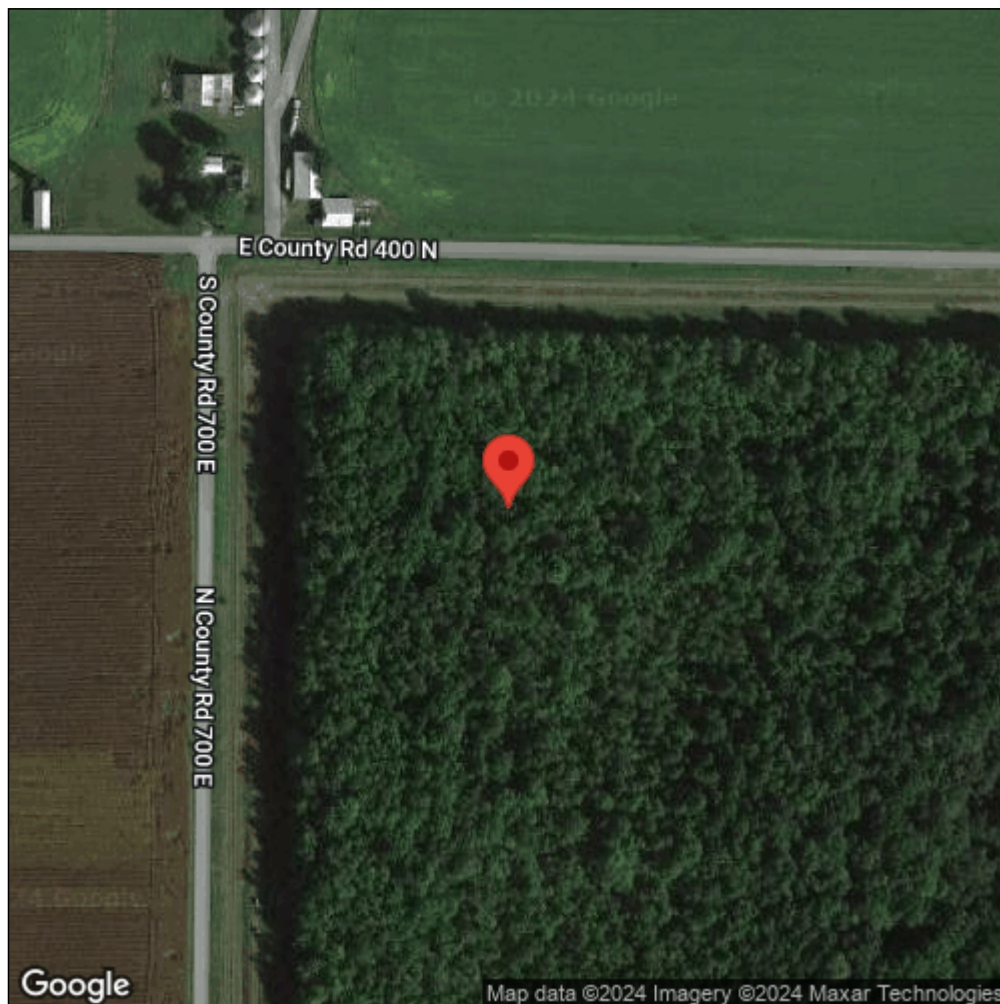
Observation Date: August 20, 2013

Date Entered: March 12, 2019

Comments: Original observer(s): U.S. Fish and Wildlife Service - BOK9810 -
Scattered plants - Treated: D



Midwest Invasive Species
Information Network



Source: MISIN. 2024. Midwest Invasive Species Information Network. Michigan State University - Applied Spatial Ecology and Technical Services Laboratory. This record is available online at <https://www.misin.msu.edu/report/misin/submit/summary/printRecord.php?obs=reprint&id=716359>