



Presence Observation

Reed canarygrass

Phalaris arundinacea



Record ID: 716366

Observer: Joshua Booker

Source: U.S. Fish and Wildlife Service

Latitude: 37.72010291

Longitude: -89.04253817

Area: Individual/Few/Several

Density: Sparse

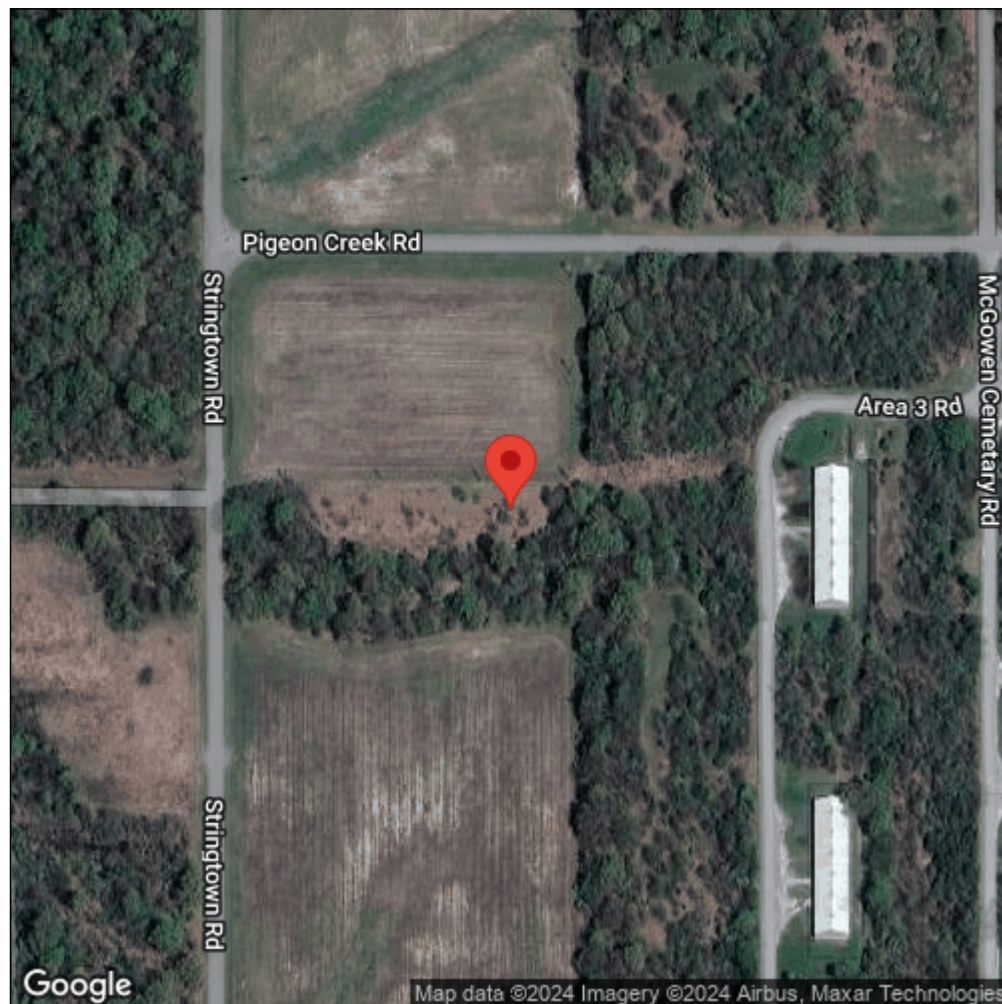
Observation Date: August 7, 2017

Date Entered: March 12, 2019

Comments: Original observer(s): U.S. Fish and Wildlife Service - CRO9856 -
Single plant - Treated: D



Midwest Invasive Species
Information Network



Source: MISIN. 2024. Midwest Invasive Species Information Network. Michigan State University - Applied Spatial Ecology and Technical Services Laboratory. This record is available online at <https://www.misin.msu.edu/report/misin/submit/summary/printRecord.php?obs=reprint&id=716366>