



Midwest Invasive Species
Information Network

Presence Observation

Purple loosestrife

Lythrum salicaria



Record ID: 721538

Observer: Rachel Hackett

Source: Michigan Natural Features Inventory

Latitude: 46.29157768

Longitude: -85.97867226

Area: Not Reported

Density: Sparse

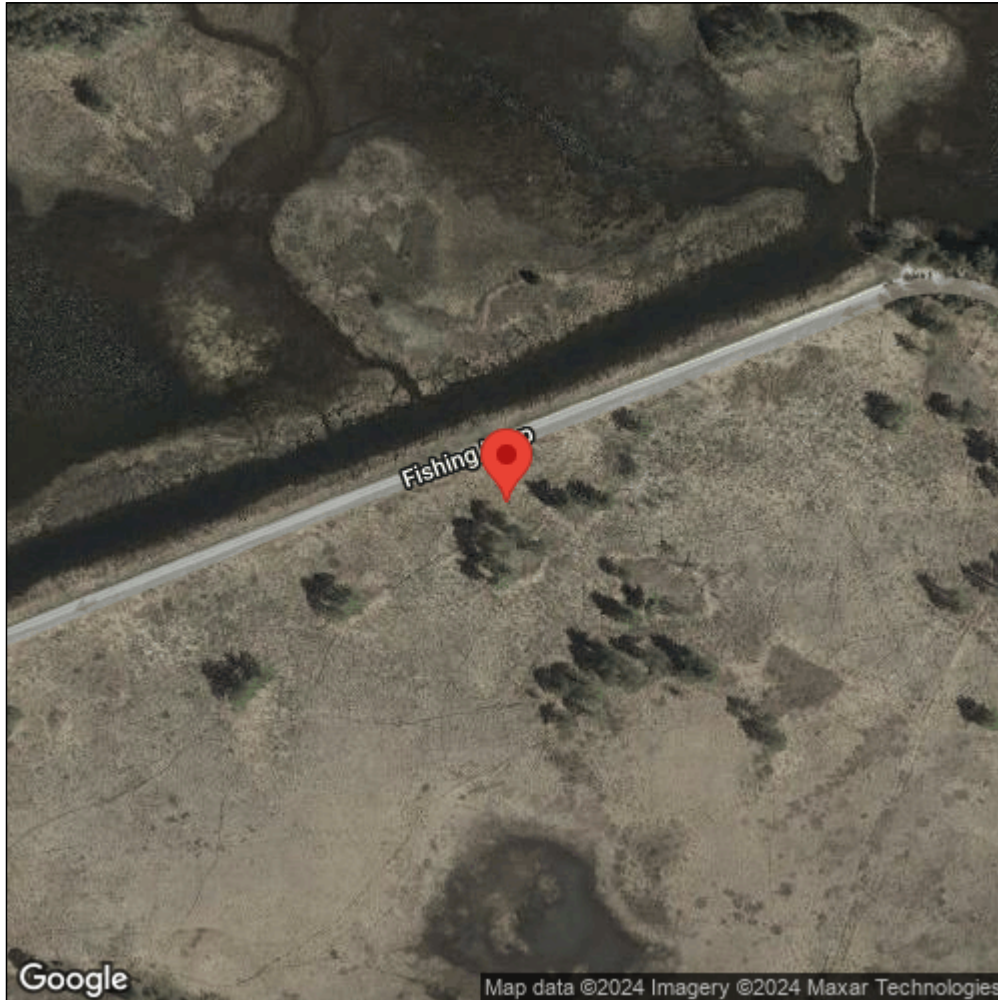
Observation Date: June 22, 2012

Date Entered: May 1, 2019

Comments: Original observer(s): Michael J Monfils - GPS Horizontal uncertainty of 25 m. Date has +/- 7 day uncertainty.



Midwest Invasive Species
Information Network



Source: MISIN. 2024. Midwest Invasive Species Information Network. Michigan State University - Applied Spatial Ecology and Technical Services Laboratory. This record is available online at <https://www.misin.msu.edu/report/misin/submit/summary/printRecord.php?obs=reprint&id=721538>