



Presence Observation

Reed canarygrass

Phalaris arundinacea



Record ID: 723236

Observer: Logan McDerment

Source: MISIN

Latitude: 42.70856387

Longitude: -82.77267304

Area: Individual/Few/Several

Density: Patchy

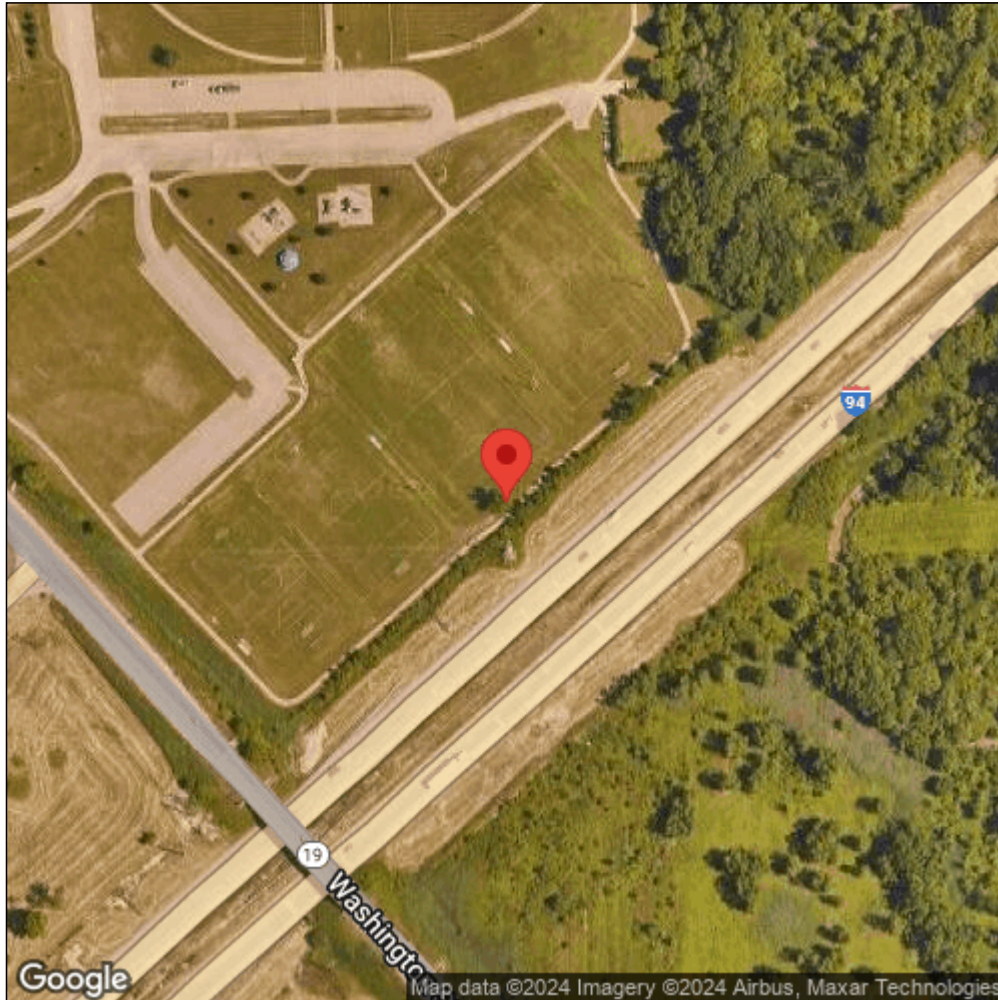
Observation Date: June 18, 2019

Date Entered: June 18, 2019

Comments: from Android; gps accuracy: 10meters patches growing around the base of a tree off the trail in Pollard park. parallel to the highway.



Midwest Invasive Species
Information Network



Source: MISIN. 2024. Midwest Invasive Species Information Network. Michigan State University - Applied Spatial Ecology and Technical Services Laboratory. This record is available online at <https://www.misin.msu.edu/report/misin/submit/summary/printRecord.php?obs=reprint&id=723236>