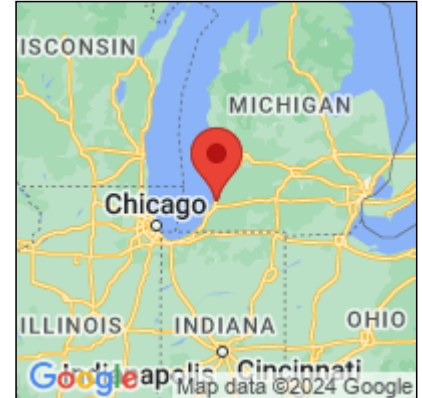




Presence Observation

Reed canarygrass

Phalaris arundinacea



Record ID: 8741

Observer: Michigan Dune Alliance

Source: The Nature Conservancy of Michigan

Latitude: 42.257781

Longitude: -86.32283

Area: Not Reported

Density: Not Reported

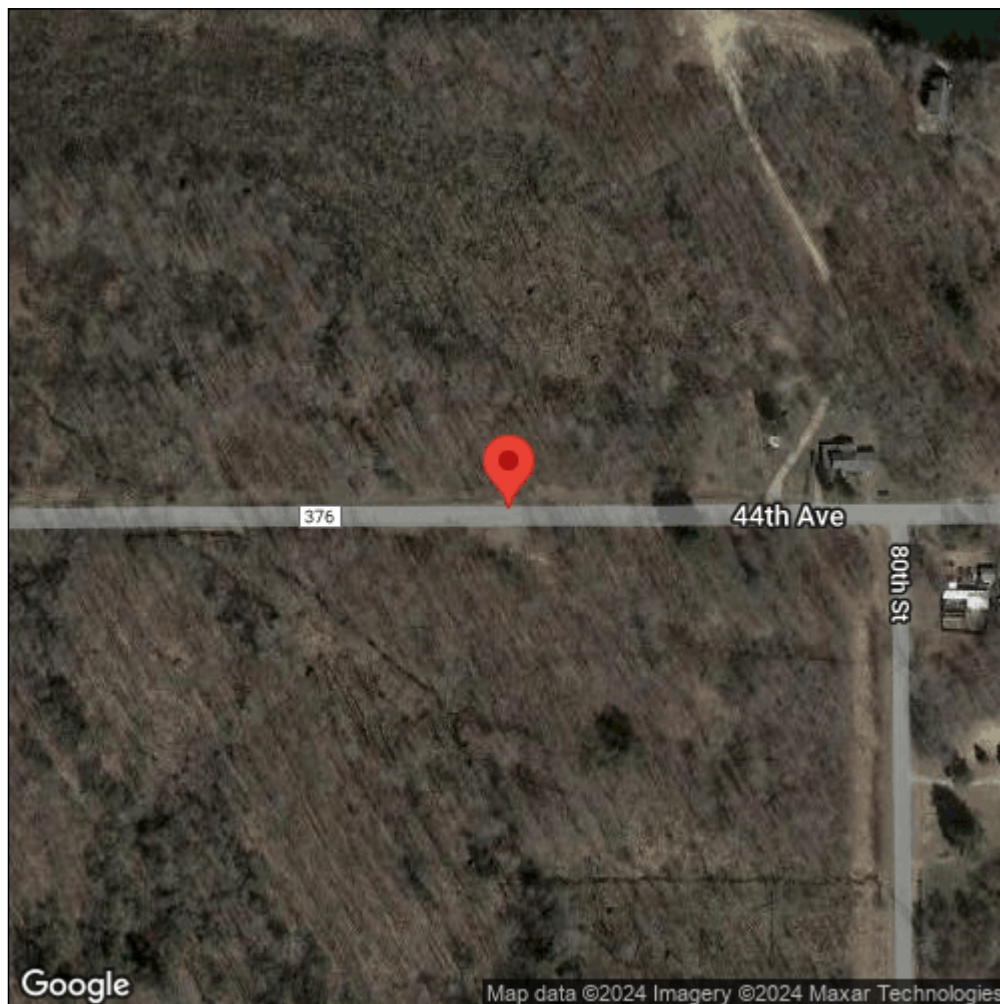
Observation Date: April 2, 2012

Date Entered: April 2, 2012

Comments: Area Surveyed 2011.



Midwest Invasive Species
Information Network



Source: MISIN. 2024. Midwest Invasive Species Information Network. Michigan State University - Applied Spatial Ecology and Technical Services Laboratory. This record is available online at <https://www.misin.msu.edu/report/misin/submit/summary/printRecord.php?obs=reprint&id=8741>